



O A K L E A V E S

A PUBLICATION OF THE LOS OSOS / MORRO BAY CHAPTER of SMALL WILDERNESS AREA PRESERVATION
P.O. BOX 6442, LOS OSOS, CALIFORNIA 93412-6442 ♦ (805) 528-0392 ♦ OCTOBER / NOVEMBER 2005

Remembering Rose....



Notes from her Friends

Ed. note: We are saddened by the passing of Rose Bowker (at home on August 26). Though many persons contributed their time and talents to the preservation of the Elfin Forest in the mid 1990s, no one will argue that anyone did more to bring it about than Rose. Following are reminiscences of some of those involved ...

From Barbara Machado: Rose Meets Shirley Otto

Rose was chairperson of SWAP, I was Development Director, and we knew we needed to meet with Shirley Otto, owner of the 40 acres of Elfin Forest we wanted to save. "Let's go to Santa Barbara and take her out to lunch," Rose suggested.

We met at the San Ysidro Ranch restaurant. Rose got to the point quickly. "We want to raise the money to purchase your land," Rose said. "We want to buy it - we aren't going to ask you to donate your property."

Shirley Otto, poised, attractive and successful, listened as Rose outlined our plans. "We need your permission to hold events in the Elfin Forest," Rose said. "People have to see it to understand why that property must be preserved."

How these two ladies hit it off! Shirley Otto gave us permission to hold walks and special events on her land. Over the next five years, we went to Santa Barbara several times and visited Shirley at her Montecito home. While the Elfin Forest had at one time been appraised much higher, Shirley accepted our offer of the \$1.5 million that we had been able to raise through a tremendous community effort.

The Elfin Forest was turned over to the County in July, 1994. Improvements like the boardwalk were made as time went on. Rose was able visit the Elfin Forest briefly just six days before she passed away. And, during those final days, Rose, who never forgot

You are invited to the

SWAP ANNUAL MEETING & VOLUNTEER APPRECIATION

Los Osos / Morro Bay Chapter

Saturday, October 15, 2005

Noon to 2:00 p.m. • Church of the Nazarene

1480 Santa Ysabel at South Bay Blvd. in Los Osos
(1/2 block east of South Bay Blvd.)

Open to SWAP members and the community

Hear archaeologist, **Dr. John Parker**, speak about "Morro Bay Chumash Culture Before & After European Contact." Dr. Parker did archaeological excavations and monitored during the building of the Elfin Forest Boardwalk, and has conducted excavations and analysis of Chumash sites for 15 years. He will illustrate his talk with a PowerPoint presentation.

We Will Also:

- ✓ Celebrate our volunteers
- ✓ Elect Board Members (SWAP members only)
- ✓ Hear reports from our Treasurer and Conservation Chair
- ✓ Have lunch together after the meeting

Help us celebrate our Chapter's 20th Anniversary!

a kindness, reminded me that we needed to go to Santa Barbara to visit Shirley again.

From Elsie Dietz (Special Events and Membership Coordinator):

Rose told me a long time ago that I was in charge of helping her to develop the "right side" of her brain. If, in any way, I helped get her started, she took off like a rocket and explored all the facets of whatever craft she undertook to learn: basketry, quilting, knitting, embroidery, origami, and hand made greeting cards. She then expanded the limits with her own brand of creativity and skill.

From Pat Grimes (Newsletter Editor and Booth Coordinator):

One of the memories I cherish most about Rose Bowker is

Remembering Rose continued on page 2



Rose and Les Bowker danced the night away at the Sock Hop for SWAP dance in the South Bay Community Center, ca. 1992. Photo by Larry Grimes.



(L-R) Rose Bowker, Elsie Deitz, Barbara Machado (in rear) and Emily Polk at a SWAP Financial Advisory Board meeting in July, 1991. Photo by Larry Grimes.



A SWAP strategic planning meeting at Barbara Machado's house in 1991. (L-R) Les Bowker, Rose Bowker, Ray Belknap (SLO Land Conservancy Director), Barbara Machado, Virginia Black, and with back to camera, Elsie Deitz. Photo by Yolanda Waddell.

Remembering Rose *cont. from page 1*

how she got me (and probably many others!) to do things I never thought I could do so we could accomplish some goal for the Elfin Forest project. Rose would make a list of "to do" jobs, all of which seemed to me would be more appropriately or better done by anyone else. Then, before I knew it, she and I were off giving slide talks or doing something else I had never imagined myself doing. And it wasn't only in goal-directed areas where she gave me gifts like that. I owe knowing the pleasures of a moonlight canoe ride to her insistence and enthusiasm. She definitely had a talent for combining fun and accomplishing goals.

From Larry Grimes (Elfin Forest Conservation Coordinator):

I like looking back for the little things that seemed uneventful at the time, but which turned out to have had a huge impact down the line. When I think of the important part Rose eventually played in SWAP's success, I'm always so grateful that Rose and Les accepted our invitation for blueberry kuchen and a tour of the Otto Property (later named the El Moro Elfin Forest by Pat) so long ago. I guess it all culminated in a lot of great pot-luck SWAP board meetings around the Bowkers' huge dining table.

From Maria Singleton (Fund Raising Advisor):

Rose came into my life in 1990, when she and the other "elves" were embarking on a fundraising campaign to save the Elfin Forest. At that time, I had lived in the county for many years but did not know that this precious place existed. After visiting the site with Rose it was impossible not to join and help with the efforts.

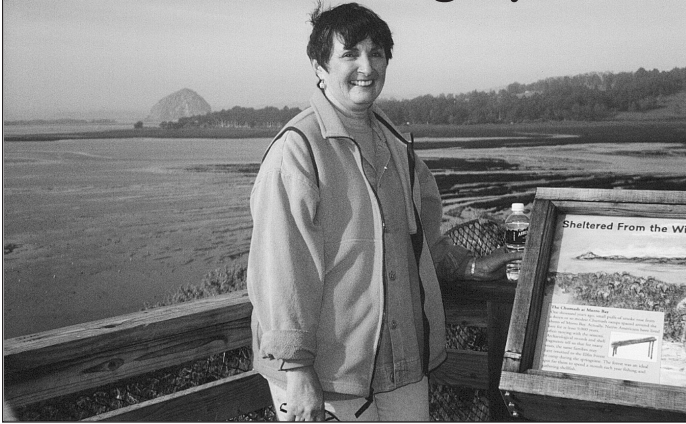
I will be forever grateful for this encounter that led to a wonderful long-term friendship and a professional relationship. Rose gave me a lot, the Elfin Forest and meaningful friendships with great folks such as: Elsie Deitz, Barbara Machado and Pat Grimes.

Rose's vision will live on for future generations and the contributions she made to improve the quality of life in our county will be felt for years to come. Rose has not left us; she is forever present in our hearts and her legacy appears around every corner.

From Karen Tacket (Fund Raising Advisor):

"You are going to do the fundraiser and hold it where?!!!" This was the response from many people who had never heard of the Elfin Forest in Los Osos and were invited to attend the marvelous and memorable "Save the Elfin Forest" event. I worked with Rose and a number of other wonderful committee members to plan an awareness campaign that would raise monies to purchase the property. Dragging ice chests filled with food and drinks across the sand, setting up large tents, tables, port-a-potties, etc. was quite an ordeal. All of this needed to be completed before all of the local and state dignitaries and community leaders showed up at noon on the appointed day. And Rose, as only she could do, made the occasion so much fun and filled with a true team spirit. This whole experience created a lasting bond between Rose, Les and my family that we will cherish forever and ever. Rose we love you! Art, Karen, Alex, & Max Tacket.

Rose Bowker's Legacy



Rose Bowker on a visit to the Elfin Forest in 2002, to see the new interpretive signs and to enjoy a lovely sunny day in the forest that she worked hard to save.

Photo by Les Bowker.

By Yolanda Waddell

In the December, 1993, issue of *Oakleaves*, Rose Bowker made a plea for SWAP members to help her raise \$150,000 by mid-spring, 1994. That amount would be added to \$1,350,000 in grants and community contributions to reach the \$1.5 million purchase price of the southern 40 acres of the El Moro Elfin Forest. If the goal was reached in time, the property could be purchased. If not, SWAP would lose a \$500,000 Caltrans grant, and would be set way back in its fund raising.

At the end of her December, 1993 "Message From Your President," Rose wrote, "As I drove home last night along South Bay Boulevard, the sun was setting and lights were coming on in Los Osos. The Elfin Forest was a quiet contrast to the rest of the community. Let's not lose this special treasure."

We didn't lose the Elfin Forest, thanks to a very energetic fundraising drive led by Rose, Development Director Barbara Machado and the other active SWAP members: husband Les Bowker, Elsie and Jerry Deitz, Pat and Larry Grimes, Yolanda Waddell, Virginia Black, and Flo Ross. By March, 1994, \$125,000 was left to be raised. The Caltrans deadline was upon us, and newsletter editor Pat Grimes wrote in the March, 1994 *Oakleaves*, "SWAP is facing the eleventh hour. We are in jeopardy of losing our previously awarded Federal and State grants if we cannot raise the money to complete the purchase of the Elfin Forest by April 1st."

During March, 1994, a miracle happened, and \$85,000 came in from the community. That left SWAP \$40,000 short. Rose appealed to our County Supervisor, Bud Laurent, for assistance. He and the other

four Supervisors agreed to contribute \$40,000 for the purchase of the 40 acres, provided SWAP would agree to "adopt" the Elfin Forest for ten years, and also write a management plan to be used as a guideline for County Parks staff. Of course we agreed. Escrow closed toward the end of June, and SWAP owned 40 acres of the Elfin Forest for fifteen minutes, until Rose handed the deed to the head of County General Services.

Rose wrote in the September, 1994, *Oakleaves*, "We did it. We ALL did it. We actually really and truly accomplished our goal of finding the funding to complete the purchase of the Elfin Forest. The El Moro Elfin Forest is now a permanent ecological reserve. I find myself drawn to the mural on the wall of Los Osos Rexall to look at the list of names of all those who made this possible. It's very impressive! And behind the names are so many stories of community spirit and willingness to work to save a very special small wilderness." She continued, "But buying the property is just the beginning."

Having worked 30 or 40 hours a week for 3-1/2 years to save the Elfin Forest (on top of a full-time job as computer consultant for Cal Poly's Biological Sciences Department), Rose could have resigned from her position as SWAP President, and enjoyed some leisure time. However, she felt a responsibility to carry out the writing of the Management Plan that SWAP had committed to. She formed a Management Plan committee in October, 1994, which produced numerous drafts over the next 18 months, until the plan was finally ready to present to the community.

The Elfin Forest Management Plan included a boardwalk that would loop around the upper and lower Elfin Forest, with two overlooks. Another suggested project was a thorough restoration of the degraded areas of the Elfin Forest. Some members of the community were unhappy with the idea of a boardwalk, but Rose held firm, saying that people with limited mobility, including parents with children in strollers as well as people in wheelchairs, had a right to visit the Elfin Forest too.

Now, in 2005, visitors to the Elfin Forest, especially those with limited mobility, enjoy strolling around the boardwalk and stopping to look out over Morro Bay from one of the two overlooks. The plants from several revegetation projects have thrived and are gradually filling in eroded areas where people's feet and ATVs once left the sand bare.

In August, six days before she succumbed to cancer and left this life, Rose Bowker paid one last visit to the Elfin Forest with her husband Les, and her nephew and his wife, who had flown from the East Coast to be with her. She spoke of the Elfin Forest often during her last weeks and months, perhaps realizing that this piece of land was her gift -- her legacy -- to future generations. By coordinating the writing of \$1,250,000 in successful grants and leading SWAP members and the community in raising the balance to save the Elfin Forest, she gave us, and herself, a gift. That gift, in Emily Polk's words, "gives itself in return not alone to the giver or receiver but to all creatures of earth for all time."

SWAP BOARD OF DIRECTORS

*The Board of Directors of the Los Osos/Morro Bay Chapter of
Small Wilderness Area Preservation (SWAP)
consists of the following members:*

Ron Rasmussen, Chair
Pete Sarafian, Vice Chair
Bob McDougle, Treasurer
Yolanda Waddell, Secretary
Bob Meyer, Member at Large
Pat Sarafian, Member at Large

SWAP BOARD MEETINGS

The SWAP Board of Directors
meets on the 2nd Monday of each month at 7 p.m.
at the Coast National Bank, 1193 Los Osos Valley Road.

The next meetings are

Monday, October 10, and Monday, November 14.

All Board meetings are open to the public.

To confirm the date, time and location
(which are subject to change), phone 528-0392.



*Fashionably dressed Weed Warrior Rosemary Baxter seemed delighted to begin digging veldt grass during the September 3rd work party.
Photo by Jean Wheeler.*

Visitor Comments

Holly Sletteland, Information Technology Director for the Cal Poly Foundation, emailed the following to Pete Sarafian: "I went to the Elfin Forest last weekend after the Mozart Festival for the first time in years, and it was a delightful surprise. You and your other weed warriors have truly brought about an incredible transformation. It is so very rare to visit any natural area nowadays that isn't heavily infested by invasive plants, and I honestly didn't spot a single weed in my entire walk. I was impressed by the number of natives you've planted as well. I know how incredibly time-consuming that is, as I am raising my own seedlings and planting them on our property. It looks beautiful! And the trails are so carefully manicured -- carefully pinched back only as much as is absolutely necessary. You really should be proud of what you have accomplished. It gives people a glimpse of what our coast used to look like, and perhaps the inspiration to make it look that way again."

"You and your other weed warriors have truly brought about an incredible transformation. It is so very rare to visit any natural area nowadays that isn't heavily infested by invasive plants... You really should be proud of what you have accomplished."

Warriors Picky About Seeds

By Pete Sarafian, Conservation Chair

A dedicated crew of seed grubbers came out in August for the monthly weed work party. The Wonderful Weekend "Seed" Warriors worked on mopping up any Italian thistle seeds that may have escaped unnoticed. The previous month's work party had netted quite a haul of dried plants and seeds down by Morro Bay in the Elfin Forest. We managed to collect most (hopefully all) of the remains. Donna Banks, Jay Bonestell, Bob Meyer, Ron Rasmussen and Pete Sarafian assisted in the seed collection. We hope that our effort will prevent the thistle infestation from spreading any further. Rosemary Baxter, who never could locate the group, came out also but ended up wandering in the Forest in vain. We were hidden in the trees down by the Bay, far from the boardwalk and out of earshot. Thanks to everyone who came out to join our conservation work.

Hidden Invaders

By Ron Rasmussen, SWAP Chair

Stealthily, sometimes alone, sometimes as a crowd they come into the forest. These are the non-native plants and noxious weeds that threaten to overwhelm the native plants that have been so carefully husbanded by our volunteers, the California Conservation Corps, and SLO County Parks.

Why "hidden"? Because the invaders are often not visible from the boardwalk or even from the several trails that lead to more remote parts of the Forest. If you happened to be in the Forest around midday on the first Saturday of the month, you may have seen a work party of volunteers emerging from the brush loaded with bags of weeds. These folks have been attacking pockets of invaders that were detected by sharp-eyed volunteers in locations not usually frequented by visitors to the Forest. Some examples are narrow-leaved iceplant that likes areas around manzanitas and wood rat nests. The Italian thistle has become established in a disturbed area along the Don Klopfer trail. Unless these "hot spots" are eliminated, the invaders can quickly spread through the Forest making their control much more difficult.

Our conservation leader, Pete Sarafian, recently received a letter praising the results of our efforts to control invading weeds in the Forest. The writer noted that very few weeds were visible from the boardwalk, and that the native vegetation was doing so well. The absence of invaders along the boardwalk is, of course, due to removing weeds in that area. But, to ensure continuing success in controlling weeds here and throughout the Forest, the invaders must be attacked any place they occur. Please help by joining us for one to three hours on the first Saturday of the month when we track down and eliminate these "Hidden Invaders" before they can spread through our beautiful Elfin Forest. Call us at 528-0392.

Let's All Pull Together!

Each time we will plan something new,
I'm sure you all know what to do.
Emerge from our hovels,
Armed with gloves and shovels,
Dress in layers and wear sturdy shoes!



-- Pete Sarafian

SWAP First Saturday Work Parties

Are held at 9 a.m. to noon on the first Saturday of each month. Volunteers should meet at the north end of 15th Street. Call 528-0392.

WALKS in the ELFIN FOREST

Third (and Second) Saturday Walks

October 8, 8:30 a.m. - Pre-Big Sit! Walk

(Second Saturday - Note earlier time)

This Second Saturday walk, beginning at 8:30 a.m., will be a pre-Big Sit! walk. (The actual Big Sit!, an international event coordinated by the New Haven (Connecticut) Bird Club, will take place on Sunday, October 9.) Birder Jim Royer, who coordinates the Elfin Forest Big Sit! at Bush Lupine Point, will lead the Saturday walk. Join Jim in finding and identifying 40 to 60 species of birds throughout the Elfin Forest. This walk is for those who just enjoy looking at birds as well as for more experienced birders. You'll come away knowing more about birds, their calls, their habits and habitats.

October 15, 9:30 a.m. - Literary Stroll

(Third Saturday) Do you enjoy having someone read to you?

Here's your chance! Take a literary stroll through the Elfin Forest with Robert Pavlik. Bob has an interesting job. He's a historian for Caltrans, and his book collection includes many by California natural history writers. As you stroll along the boardwalk with him, Bob will introduce you to a variety of authors and poets who have written about natural history, and will apply their perceptions to the Central Coast.

November 19, 9:30 a.m. - Off The Beaten Path

Follow ecologist Dr. Les Bowker to a part of the Elfin Forest not often seen by Forest visitors. He'll lead you off of the boardwalk and along the little-used Habitat Trail in an easterly direction toward South Bay Boulevard, and then down into the Don Klopfer Grove, the largest oak grove in the Elfin Forest. Les will help you to see the plants, trees, lichens and the life that lives on and under them with new eyes. You'll learn to think in terms of the homes or habitats of the plant and animal occupants of the Elfin Forest, and how they establish and then occupy their own piece of the Forest. You'll have an excellent adventure - off the beaten path. Be sure to wear long sleeves and jeans to avoid being scratched by the underbrush.

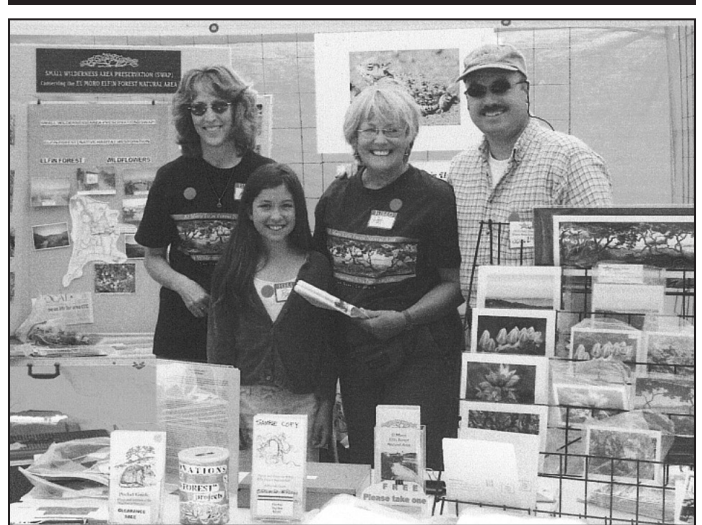
December 17, 9:30 a.m. - Sketch Walk

Join artist Barbara Renshaw for a stroll along the Elfin Forest boardwalk to take in the views of the Morro Bay estuary and sandspit from the Bush Lupine Point and Siena's View overlooks. You'll stop in the Woodrat Hall oak grove to marvel at the ancient gnarled coast live oak trees. As you go, you can sketch the bay, birds on the saltmarsh, oaks, or some of the Forest's varied plant life. No drawing experience is necessary. Bring a pad of drawing paper (no larger than 9-1/2" by 12-1/2"), colored pencils or pastels, and some drinking water. Consider bringing a camera too. You'll be surprised how quickly you discover the artist in you!

Walks in the Elfin Forest begin at 9:30 a.m. (unless otherwise noted) at the north end of 15th Street off Santa Ysabel in Los Osos. Wear comfortable shoes, long sleeves and pants to avoid poison oak and mosquitoes. Please park carefully, avoiding driveways and mailboxes. We ask that you not bring dogs or other pets. The easy paced walks last 1-1/2 to 2 hours. For more information call (805) 528-0392.



Dr. John Parker holds forth about archaeological evidence of past residents of the Elfin Forest for a rapt audience. Photo by Jean Wheeler.



Tending SWAP's booth during the June Family Fun Fest were Katie Davis, Rosaly Danielson, Booth Coordinator Pat Sarafian and Scott Danielson. Pat is looking for booth workers for the Oktoberfest in Baywood on Sunday, October 30. Try it--it's fun! Photo by Yolanda Waddell.

An Invitation to be a Board Member

Have you reached a time in your life when you are ready to take on a new challenge? To give back to the community that has provided you with a lovely preserve. the Elfin Forest, to enjoy? If so, then SWAP needs YOU. Our Board of Directors meets once a month, on the second Monday of the month, from 7:00 to 9:00 p.m., at the Coast National Bank Community Room in Los Osos.

In addition to the monthly meeting, Board members usually are involved in some aspect of running SWAP or serving the Elfin Forest, but we don't ask for more time than a Director can give. If you think you might like to have a go at it, leave a message on our answering machine at 528-0392, and one of the Board will talk to you about what is involved.

Myoporum

By Dirk Walters, Ph.D.; Drawing by Bonnie Walters

The plant profiled for this issue of *Oak Leaves* is a fairly common hedge plant cultivated around Morro Bay and Los Osos. It has also been planted along much of coastal Southern California. It can also be seen growing as a weed all around Morro Bay Estuary. Over the years, I have collected several species lists of Elfin Forest plants and this plant, myoporum or *Myoporum laetum*, appears only on one of my early lists. Hopefully, it is no longer growing within the Elfin Forest.

Myoporum is so commonly planted around the Elfin Forest, that I think it must be considered a possible invader. This is in spite of L.H. Bailey's declaration in his 1910 edition of *Cyclopedia of American Horticulture* that this species is not considered invasive. More recent native plant floras either ignore it or indicate that it occasionally colonizes disturbed areas. This would indicate that it should be easily removed if a few individual plants might become established. I would watch out for them along the edge of the Elfin Forest shared by the private lots.



Myoporum is a native of New Zealand. New Zealanders call it ngaio. In California, however, its common name is simply its genus name. It is one of our more easily recognized shrubs or small trees. It has shiny green leaves that are up to 4 inches (ca. 10 cm) long and 2 in (ca. 5 cm) wide. When one holds the leaves up to the sky and looks through them, hundreds of yellowish dots resembling pinpricks will be visible. These dots are embedded oil filled glands. Leaves of this type produce a condition Botanists call punctate. The name myoporum refers to these leaf glands.

The white, bowl-shaped flowers possess rows of conspicuous purple dots that radiate from the base of the petals (actually lobes of a fused corolla). The five stamens are small and easy to miss. The flowers arise in the angle formed by the leaf and stem. As flowers age, the leaves tend to fall away, leaving a linear mass of small fleshy fruits. The fruits are first green and then turn reddish or purple.

As indicated above, this plant is commonly used in coastal landscaping because it is fast-growing, and with pruning, can be quite handsome. It has two major drawbacks. First, its evergreen leaves are relatively short lived and thus fall continuously throughout the year making it a poor candidate for low maintenance gardens. Second, and more serious, is its extremely poisonous leaves and its slightly poisonous berries. Apparently, the berries taste so bad that there is only one recorded human death caused by this plant: that of a one-year old child. However, there are many recorded livestock deaths caused by eating this foliage.

Oh No! Not Again!!

Sad to say, some hooligan - maybe the same person who stole the interpretive panel titled "The Flood" in 2003 - has torn the interpretive panel at the 16th Street Boardwalk intersection from its frame and absconded with it. The title of that panel is "All Things Have Life."

The theft apparently happened on Saturday night, September 3rd, and was reported to SWAP on Monday, September 5th, Labor Day. Someone will have to labor to build a new frame after a replacement panel has been fabricated. The replacement will cost up to \$600.

If any of our readers remember seeing anything unusual on Saturday evening, September 3rd, please phone us at 528-0392.

Photo by Bob Meyer.

Where To Call, Where To Write

If you have questions about SWAP activities or want to volunteer, please call 528-0392 and leave a message.

A recorded message will have information about our 3rd Saturday Walks, Work Saturdays, and other events.

If you have questions, concerns or comments about any problems in the Elfin Forest, call or write:

Chuck Lowe, SLO County Parks Supervising Ranger,
1087 Santa Rosa Street, SLO, CA 93408, (805) 781-4417.

Owners of dogs off-leash can be cited.

If you witness dogs off-leash, vandalism or obvious crimes, call the County Sheriff at 781-4550.



OAK LEAVES

is published six times per year beginning in February.

Co-editors are Yolanda Waddell and Jean Wheeler; layout is by Katy Budge. Editing assistance by Pat Grimes.

Contributors to this issue:

Les Bowker, Wendy Brown, Elsie Dietz, Larry Grimes, Pat Grimes, Barbara Machado, Bob Meyer, Ron Rasmussen, Pete Sarafian, Maria Singleton, Karen Tackett, Yolanda Waddell, Dirk and Bonnie Walters, Jean Wheeler

Printed at Hay Printing, Morro Bay on recycled paper.
Labeled and mailed at Achievement House.

Deadline for copy to Oakleaves is the first Wednesday before the month of issue. If possible, all copy should be submitted by e-mail to: ywaddell@kcbx.net AND jeanwheeler@charter.net.

Thank You to Our New and Renewing Members

Compiled by Wendy Brown, SWAP Database Coordinator

NEW MEMBERS:

Pat Akey
Charlotte Bailey
Mike & Rebecca Espy

Londa Napoli*
Elizabeth Will and Ben Burgoa*

RENEWING MEMBERS:

Ruby V. Avelar*
Carolyn Boomer*
Katie & Jerry Davis*
Robert & Gail Davis*
Kathleen M. Delzell*
Ernest & Barbara Eddy

Lurlie Edgecomb*
Joanna Frawley*
Myron & Priscilla Graham*
Roberta Knapp*
Leora Markwort
Howard & Marlo Miller*

William H. Newman*
Pat & Pete Sarafian*
John Steinbeck
Yolanda & Jay Waddell*
Michael Walgren*
Jean D. Wheeler*

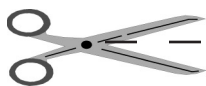
DONATIONS:

Valerie Gemanis
Jean Hunter* (In honor of scouts and scoutmasters - see related item)
Yolanda & Jay Waddell* (In memory of Rose Bowker)

**Thanks to those listed above who donated more than the \$12 membership dues.
The additional donations will be used for special projects in the Elfin Forest.*

Remembering Some Scoutmasters

Jean Hunter was saddened by the tragic deaths of four scout leaders last summer during the National Scout Jamboree at Fort Hood, Virginia, as well as the scoutmaster who perished in Sequoia National Park. She wanted to make a donation in their memory, and remembered that her grandson, Russell Hunter, was one of the Eagle Scouts who framed and installed the interpretive panels in the Elfin Forest. Our thanks to Jean for thinking of the Elfin Forest and SWAP. Her donation, in honor of the Eagle Scouts and in memory of the scout leaders, will be placed in our Elfin Forest projects fund.



SWAP Shoppers Order Form

1. MURAL SHIRTS (Older Design) - circle sizes

Words on shirt: "El Moro Elfin Forest Natural Area,
Small Wilderness Area Preservation, Los Osos, California"

___ Short Slv. T-Shirt (med., Lg, XLg, XXLg, XXXLg) @ \$15.00 = ___
___ Long Slv. T-Shirt (med., Lg, XLg, XXLg, XXXLg) @ \$17.00 = ___
___ Sweatshirt (med., Lg, XLg., XXLg, XXXLg) @ \$25.00 = ___

2. MURAL SHIRTS (New Design) - circle sizes

___ Short Slv. T-Shirt (Sm, Med, Lg, XLg, XXLg, XXXLg) @ \$15.00 = ___
___ Long Slv. T-Shirt (Sm, Med, Lg, XLg, XXLg, XXXLg) @ \$17.00 = ___
___ Sweatshirt (Sm, Med, Lg, XLg, XXLg, XXXLg) @ \$25.00 = ___

3. PHOTOS OF THE ELFIN FOREST

Original photo note cards by Bob Meyer @ \$3.00 = ___
Original photo postcards by Bob Meyer @ \$1.00 = ___

4. MURAL PRINTS

signed 5 1/2" X 17" prints by artist, Barbara Rosenthal
___ Black matted Mural @ \$20.00 = ___

5. NEW POCKET GUIDE

Useful 56-page guide to plants & animals of the Elfin Forest @ \$2.00 = ___

SUBTOTAL

(Prices include tax) ___

Shipping cost if outside of Los Osos/Morro Bay each Pocket Guide \$0.90 = ___
all other items \$2.50 = ___

TOTAL OF ORDER

(Please print when filling order — and indicate HOW MANY)

Name _____

Phone (with Area code) _____

Address _____

City/State/Zip _____

Make checks payable and mail to:

SWAP, P.O. Box 6442, Los Osos, CA 93412 - 6642.

Call-in orders may also be made: (805) 528-0392

New Item!

SWAP has recently published a 56-page Pocket Guide update titled, "Plants and Animals of the Elfin Forest Natural Area." It contains lists of the Forest's mammals; reptiles and amphibians; birds; common arthropods including a separate list of butterflies and moths; gastropods; a descriptive list of vascular plants, mushrooms; and a 56-species list of lichens. There is also a Habitat Map of the Elfin Forest.

The Pocket Guide sells for \$2.00.

Volunteers Needed for Oktoberfest

Los Osos / Morro Bay Chapter
 SMALL WILDERNESS AREA PRESERVATION
 A Non-Profit Public Benefit Corporation
 P.O. Box 6442, Los Osos, CA 93412-6442
 (805) 528-0392



Address Service Requested
 Per Name or Current Resident

Non-Profit Org.
 U.S. Postage
 PAID
 San Luis Obispo, CA 93402
 Permit No. 112

Volunteers Needed for Oktoberfest

SWAP will have a booth at the Baywood Park Oktoberfest on Sunday, October 30, between 10:00 a.m. and 4:00 p.m. We need volunteers to talk with visitors, give out literature, and sell T-shirts. If you can work a two-hour shift between 9:00 am and 4:00 pm on that day, please call SWAP's message phone at 528-0392. Give your name, shift preference, and phone number. Join us, you'll have fun!



Are You Current?

Please look at your mailing label and see if your membership is current. The date on the label shows when your membership expires. After that date, we will not be able to send you our newsletter.

Timely renewal of your membership helps us to save on postage and the time needed to send a reminder. Every membership helps us to be more convincing to foundations and government agencies when we ask them for funds. They all want to know "How many members do you have?"

MEMBERSHIP FORM

Name _____

Address _____

City/State/Zip _____

Phone _____

☐ New Member ☐ Renewing Member

☐ Member \$12 ☐ Defender \$100

☐ Steward \$25 ☐ Champion \$250

☐ Protector \$50 ☐ Guardian \$500

☐ Life Member \$1000

☐ I want to help, please call me!

Memberships include a subscription to SWAP's bimonthly newsletter, *Oakleaves*. All donations to SWAP are tax-deductible.

EVERY membership counts!

Make checks payable to: SWAP.

Mail to: Small Wilderness Area Preservation,
 P.O. Box 6442, Los Osos, CA 93412-6442.